



VANGUARD™ Pro

**User Guide
Version 5.2**

Table of Contents

Table of Contents 5
Annex : Using IT-Finance Charting Tools..... 6
 Charting Toolbar Description..... 12

Annex : Using IT-Finance Charting Tools

The following presentation will help you understand the basics of IT Charts Compact. IT Charts Compact can be fully customisable: change colours, style, scale type, add indicators, switch indicators, change indicators parameters, make comparisons between stocks, resize indicators windows.

The following examples are not based on Forex prices and data but can be applied to them.

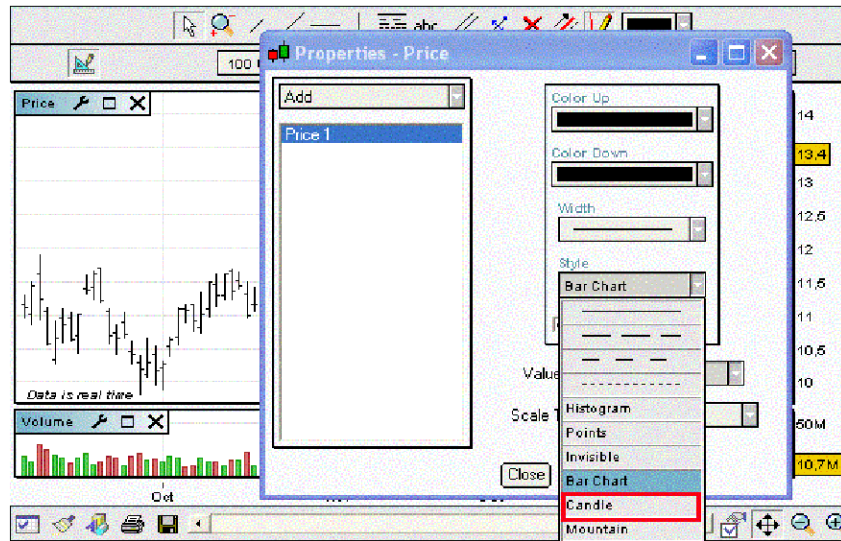
Here are some examples of customisation:

Let's begin with a 3-month closing line view of Alcatel without any indicators. Let's change from a closing line view to a candlesticks view, 2 possibilities:

- Right-click on the closing Alcatel line and select "Properties Price"
- Left-click on the tool outlined in red below. Both launch the "Properties Price" window.



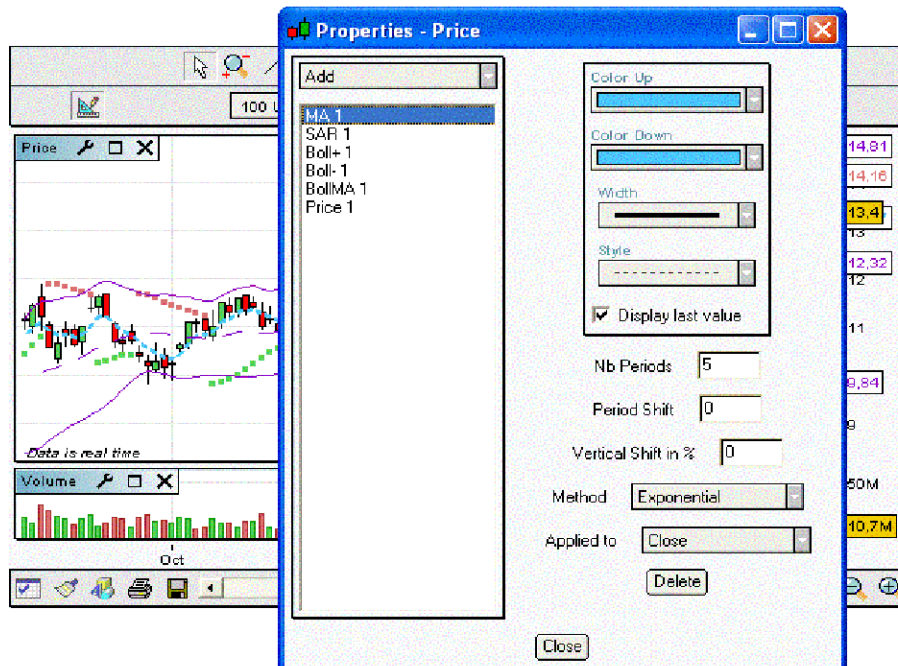
Then click on the "style" drop-down menu and choose "Candle".



Now, let's introduce a 5 days moving average, 20 days Bollinger and standard Parab SAR on the Alcatel candlestick chart. Launch the "Properties Price" window and click at "Add" drop-down menu to include them one by one.

Make sure you have on the left side of the "Properties Price" window : MA 1 ; SAR 1 and (Boll+ 1 + Boll- 1 BollMA 1).


Click on MA1 and select "Nb Periods" 5. Please note that you could change other settings of the MA depending on your needs. Here is an instance with a bigger width, a blue colour and a Exponential Method :



Note that you can resize the horizontal scale by clicking on the left button of the mouse in the red rectangle outlined below, holding down the left button and moving the mouse to the left

or to the right. You can also resize the vertical scale by clicking on the left button of the mouse in the blue rectangle outlined below, holding down the left button and moving the mouse upwards or downwards.

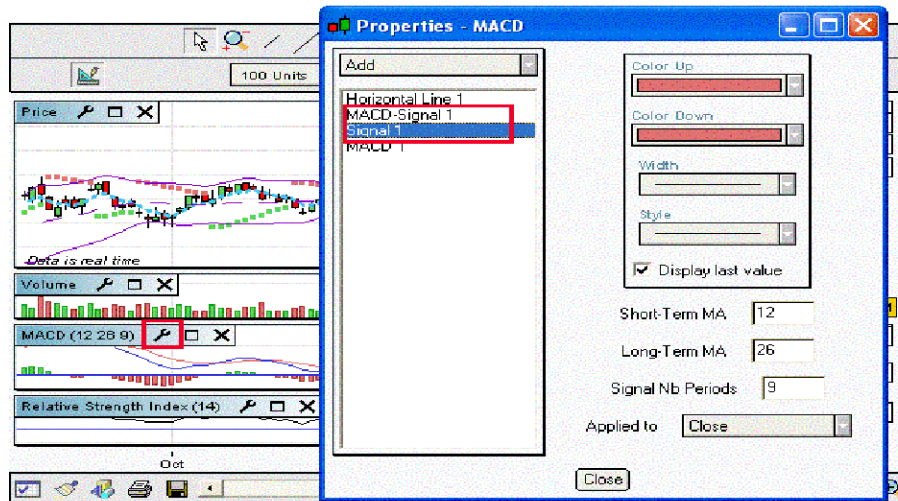


Note that you can come back to the optimised view by clicking on the icon 

Let's introduce a 12 26 9 MACD and a 14 days Relative Strength Index.

Left click on the "Add Indicator" drop-down menu that is at the top right position of the charting window, select MACD first and then select Relative Strength Index. Let's change MACD histogram to a two lines MACD view.

Click on the tool outlined below to change the properties of the MACD. Select MACD-Signal 1, then click on "Style" drop-down menu and select "Invisible". Then, select Signal 1, then click on "Style" drop-down menu and select "-----". Finally, select MACD 1, then click on "Style" drop-down menu and select "-----".



Note that you can hide the indicators titles by unchecking "Always display Indicator Titles in charts" on the "Preferences" Menu

Let's move the "Relative Strength Index" window above the MACD window. Left click on the "Relative Strength Index" title, outlined below in red, hold down and move the mouse upwards until you see the rectangle outlined in blue.



Note that you can also enlarge the "Relative Strength Index" window by left clicking on the white blank between "Price" window and "Relative Strength Index" window, holding down and moving the mouse upwards.



You can define two different parameters regarding the quantity of quotes to load ("Duration") and the timescale ("View") for the charts you are viewing.



Duration: selection of the number of quotes loaded

This option is available in both Intraday and End of Day mode. It defines the quantity of data you wish to load. For instance, if you wish to have 2 years of quotations loaded into your software, you should select "2 Years" in the drop-down menu named "Duration". Changing the chartered stock will not affect the selection in terms of the duration option:

in the same example, if you have loaded 2 years of historical data for a stock, say Vodafone, then switching for another stock, say Microsoft, will load 2 years of data. The time to load the data therefore directly depends on the duration option you have chosen: 1 day of quotations will obviously take less time to load than 5 years of quotations. Note that you can also select the quantity of quotes to load in terms of "units". One unit corresponds to one trading day. 50 units therefore correspond to 50 trading days or 10 weeks of quotations.

Tip: we advise you to create at least 2 templates (please refer to the corresponding section). The first template could use a small amount of data and will hence load quickly. The second one could use more data to make deeper analysis.


Timescale: representation of each candlestick or bar chart

Changing the timescale resolution will directly affect the meaning of each candlestick (or bar chart, or any other dot as chosen in the 'Style' drop-down menu in the 'My Indicators' menu). The timescale resolution defines the number of time units which one candlestick contains. For instance, each candlestick will represent 5 minutes of trading orders if you select "5 minutes" in the drop-down menu named "View". Note that you have the choice between minutes, hours, daily, weekly, monthly and yearly resolution. The tick-by-tick option is a new functionality, allowing you to visualise quotes instantly.


Calculation method: in weekly representation for instance, the open, high, low, close prices are respectively the Monday opening, the highest, the lowest and the Friday close of each week. The volume in this mode is the sum of the volumes of the 5 trading days of each week. Bear in mind that changing timescale resolution affects all graphs, indicators and trend lines.

Charting Toolbar Description


Cursor Mode (Default Mode)


The icon  corresponds to the Cursor Standard Mode, which is selected by default. Click on the left button of the mouse anywhere on the charts, hold down and move your cursor to move the charts. It can be helpful when you want to display some future.

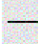
Zooming into the chart


The icon  is the zoom button. Click on the left button of the mouse to set the first date of the time-period on which you wish to zoom in. Move the mouse rightwards and click again on the left button to set the second date. Note that on a zoomed view, you can use the horizontal scroll bar at the bottom of the chart to see quotes from other dates with the same zoomed view.

Drawing a segment or a line


The icon  representing a segment allows you to draw segments. Click on the left button of the mouse to define the first point of your segment. Then move the mouse cursor and click again on the left button to define the second point of the segment. The segment will be consequently drawn.

The icon  representing a longer segment than the previous icon allows you to draw lines. The method to draw lines is similar to the method of segment drawing, clicking on the left button of your mouse to successively define two points by which the line should go through.


The icon  still allows you to draw a line, but the drawn line will this time be horizontal.

The icon  allows you to draw a vertical line.


Drawing Fibonacci lines

Select the Fibonacci levels icon and click with the left button on two points in the chart to define the two extreme points of the Fibonacci levels . A series of horizontal lines are drawn at the Fibonacci levels of 0.0%, 23.6%, 38.2%, 50%, 61.8% and 100% of the trend line. Fibonacci levels can be customised using the "Edit and Configure the object characteristics" feature.


Typing text

Clicking on the icon  allows you to add text on the charts. Once the icon is selected, you can click anywhere on the charts to type your text. A window will automatically open, allowing you to select the text's font, size, style and colour. Click on **OK** to confirm your choice. Bear in mind that you can modify the place in which the text is situated (refer to paragraph H) and the style options of the text (refer to paragraph J).


Inserting comments to your studies

If the icon  is selected, a frame opens beneath the charts, allowing you to type in your comments for the loaded stock. Clicking again on the icon will only hide this frame without deleting your comments.


Copying an object

The icon  represents two parallel lines. This button allows you to make a copy of any line, but also of any text element on your chart. Simply click on the object to copy and click anywhere else on the chart to paste the new object. Notice that when you approach an object, this object turns to light blue, indicating that you can already click with your left mouse button to select it; it thus prevents you from having to aim precisely on the object, giving you a wider area in which to click.


Moving an object

The button  is very similar to the previous one, in the sense that instead of copying an object, the same procedure will move any object you have selected. This feature is very much like the 'cut and paste' function in word-processing software.

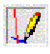
Deleting an object

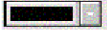
Clicking on this icon  and then clicking on any object (text or line) will delete it. Note again that when you approach an object, this object turns to light blue, indicating that you can already click with your left mouse button to delete it.

Changing the options of an object

The icon  allows you to change the options of an object, whether it be a text element or a line. Click on the object to modify, and a window opens to let you modify the characteristics of this object: style, font, size and colour for text, width, colour, style and limits for lines.

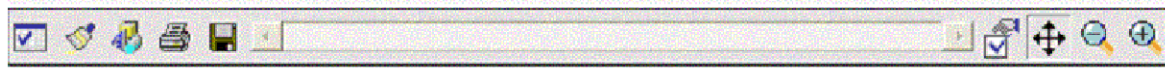
Hiding texts and lines

Activating the button  hides all the objects (texts and lines) from your charts without deleting them. Click back on this button to see them again. Note that you cannot insert texts nor draw lines while activating the hide-command. In fact, the hide-command being activated, most of the other drawing buttons above appear shaded, being inactive.

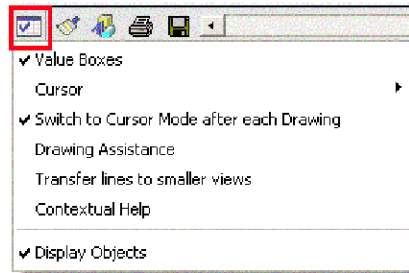
 Click on this icon to change the colour. Thus, when you draw it very useful to draw support and resistance with different colours.



Select/Deselect this icon activate/deactivate the icons on the icon bar.



When you click on the first icon, you access this pull down menu.



Selecting values box opens a new window. Here you can read information about the prices (open, high, low, close) and the levels of the indicators.

By clicking on "cursor", you access a new pull down menu giving you the choice for the style of cursor (circles, line, cross, none).


When you select Switch to Cursor Mode after each drawing, you obtain the cursor after each line drawing.

When this option is not selected, you can draw several lines on after the other.

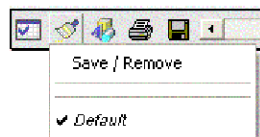
Drawing assistance can be selected help you in drawing supports and resistances: each time you place the mouse cursor near a specific quote price (extremum, close, open) or near an indicator specific value (bollinger, oscillator...), the first value used to draw the line will be this specific value and the drawing assistance will help you in selecting the second point needed to draw the line.

By selecting contextual help, you can obtain some information about the indicators. You only have to place the mouse cursor on the title of the indicator. Stop moving and you obtain the information.

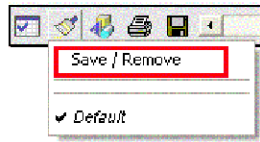
When you select/deselect Display Objects, the icon bar and the pull down menu are active/inactive.

To save your templates, you click on this icon 

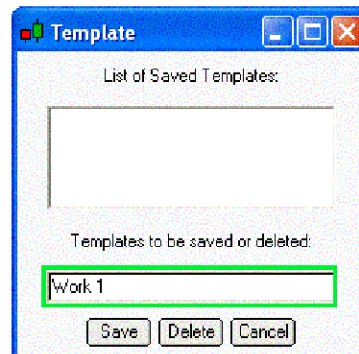
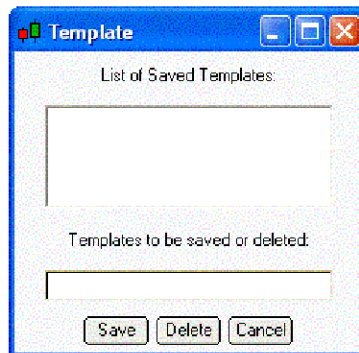
You obtain this new window




Click on Save/Remove

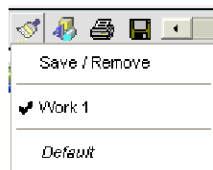


This window appears



Click in the green box and give your template a name. Then, click on save. Your template is saved.

When you want to load it, you've just to click on this icon . There's the name in the pull down menu.





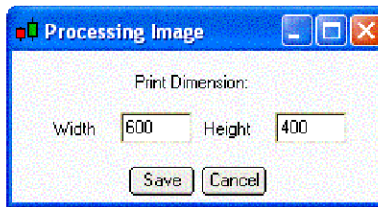
When you click on this icon you have access to a tools library to make your graph analysis. You can also add some text.



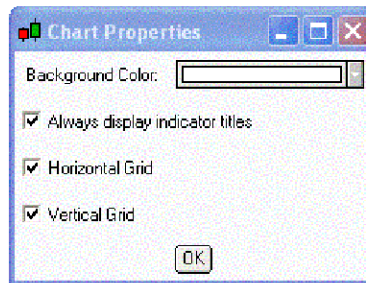
Click on this icon to save the news elements drawn on the graph (support, text, resistance...)



Click on this icon and choose the width and the height of the image and print it



Click on this icon to choose the properties of the graph.



Click on the colour and select another one of your choice.

When you select "always display indicator titles" you've got always the titles of the indicators.

Horizontal grid, click this option to active the horizontal Grid

Vertical grid, click this option to active the vertical Grid



You can come back to the optimised view by clicking on the icon



Click on – to zoom out and click on + to zoom in.